



DISPLAY ASSEMBLY INSTRUCTIONS

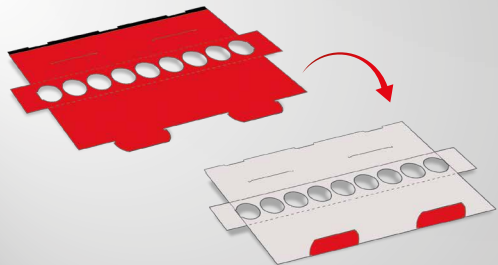
▶ Scan me!

APP for AD Aroma
Car Air Fresheners

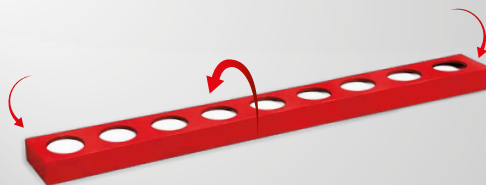


< Watch the video on how to assemble the APP for AD AROMA display

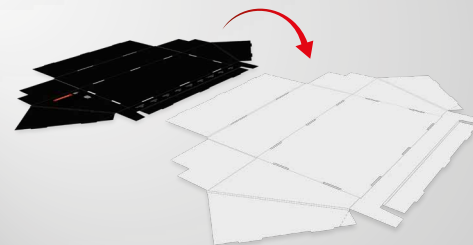
1 Place the insert on a flat surface with the red side facing down.



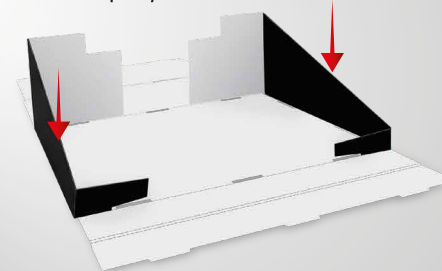
2 Fold the insert along the crease lines and secure it using the two side tabs. Fold the side flaps inward.



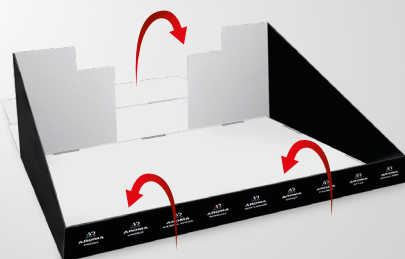
3 Place the display on a flat surface with the black side facing down.



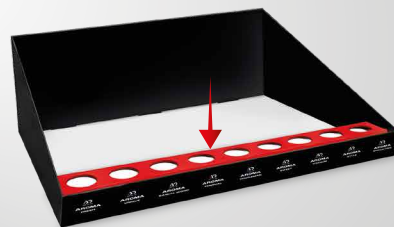
4 Fold the side flaps and lock them in place inside the display.



5 Fold the front and rear panels and lock them in place inside the display.



6 Insert the red insert into the black display base.



7 Prepare the header card for installation. Please note that it has two different sides: Side A and Side B



8 Attach the header card to the display using the correct side.



10 **DONE!!**
The display is ready for use.



ASSEMBLE WITH CARE

Do not use excessive force during assembly. The display is ready for use without glue.



SAFE, CONVENIENT AND DURABLE

Make sure all flaps are securely locked in place and FILL the display with products.

