

APP AirFlow

Paint protection coverall

APP No. 090721 - 090725

APP AirFlow is professional lacquering coverall made of a very lightweight and resistant lin-free microporous material.

It provides maximum body protection against contact with dust and liquids.

The blue panel on the back made of breathable SMS fabric ensures comfort while working in the spray booth.

The suit has drawstrings at the hood, waist, ankles, a pocket on the right chest, long and elasticated cuffs in the sleeves and a strip with adhesive tape to protect the zip.



APP AirFlow paint suits are an ideal combination of two types of materials:

WHITE

Impermeable to liquids and dust, providing maximum protection (Type 5B and 6B).

BLUE

Air permeable, providing comfort while working.



APP AirFlow

Paint protection coverall

Design:

1 Fabric covered with microporous film (65 g/m²) lint-free and non-absorbent
- Provides superior protection against liquids and dust. It has anti-electrostatic properties and is suitable for hazardous areas.

4 Sewn-in welts optimized cut and ribbing at: waist, legs and hood increase flexibility and comfort.

2 SMS breathable fabric insert (55 g/m²) on the back minimizes the risk of overheating.

3 Zip protection flap closed with adhesive tape

5 Wide cuff

6 Zipper double-slider zipper

7 Pocket



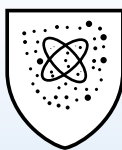
EN ISO 13982-1:2004
+A1:2010 TYPE 5B



EN13034:2005
+A1:2009 TYPE 6B



EN1073-2:2002
Class 1



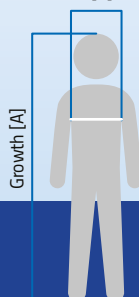
EN1149-5:2018



European standards for chemical protective clothing:

- **EN ISO 13985-1:2024+A1:2010 Type 5B** - Particle-impermeable clothing, Type 5B - additionally offers biological protection (hence the letter "B")
- **EN 13034:2005+A1:2009 Type 6B** - Clothing with limited splash resistance, Type 6B - additionally provides protection against biological contamination, such as bacteria, viruses or other infectious agents (hence the "B").

Chest width [B]



| APP AirFlow paint coverall | | |
|----------------------------|------------|-----------------|
| Size | Growth [A] | Chest width [B] |
| M | 167-174 cm | 95-102 cm |
| L | 175-182 cm | 103-110 cm |
| XL | 183-190 cm | 111-118 cm |
| XXL | 191-198 cm | 119-129 cm |
| XXXL | 199-206 cm | 130-141 cm |

CE The suit meets the standards of Personal Protective Equipment Category III in accordance with Regulation (EU) 2016/425: Certification body CE 0624

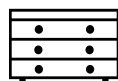
APP AirFlow

Paint protection overall

Application:



SPRAY PAINTING
AND CAR PAINTING



FURNITURE MANUFACTURING
AND VARNISHING



CONSTRUCTION, INCLUDING
AT FIBERGLASS, MINERAL WOOL,
ASBESTOS FIBERS



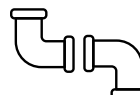
HOSPITALS
AND EMERGENCY SERVICES



PHARMACEUTICAL INDUSTRY,
LABORATORIES



AGRICULTURE AND FOOD
INDUSTRY - WORK REQUIRING INCREASED
PROTECTION AGAINST AGGRESSIVE
LIQUIDS, SOLVENTS, OR DETERGENTS



WATER AND SEWAGE WORKS,
SEWAGE AND WASTE
MANAGEMENT



WORK IN CONDITIONS
OF MODERATE
POLLUTION

Safety:

APP AirFlow suit is made from non-hazardous and environmentally non-toxic raw materials.

ADVANTAGES

| | | | | | | | |
|---|--|---|---|---|-------------------------------------|---|--|
| + | PROTECTION: TYPE 5 AND 6 PROVIDES RESISTANCE TO DUST AND LIQUIDS | + | LINT-FREE MATERIAL COVERED WITH MICROPOROUS FILM WITH BREATHABLE INSERT ON THE BACK (SMS) | + | DOUBLE-SLIDER ZIPPER | + | CE MARKING AND COMPLIANCE WITH STANDARDS |
| + | FLAP WITH SELF-ADHESIVE TAPE TO PROTECT THE ZIPPER | + | RIGHT CHEST POCKET | + | WELTS AT THE HOOD, WAIST AND ANKLES | + | WIDE SLEEVE CUFF |

| APP No. | Product name | Size | Colour | Qty |
|---------|-------------------------------------|------|----------------|------|
| 090721 | APP AirFlow - Paint protection suit | M | white and blue | 1 pc |
| 090722 | APP AirFlow - Paint protection suit | L | white and blue | 1 pc |
| 090723 | APP AirFlow - Paint protection suit | XL | white and blue | 1 pc |
| 090724 | APP AirFlow - Paint protection suit | XXL | white and blue | 1 pc |
| 090725 | APP AirFlow - Paint protection suit | XXXL | white and blue | 1 pc |