



**modular**  
INDUSTRIAL LINE



# INFORMATION LEAFLET

## APP Modular Industrial Line

**Ready colours** in the **APP Modular Industrial Line** system of lacquers and additives are based on a single line of pigment pastes intended for colouring with a selected resin, in accordance with the purpose and expected final effect.

We fulfil on-line paint orders of at least 1 litre of the selected type in a colour matching the order from over **20,000 colours** from the RAL, NCS, British Standard, PANTONE palettes and the most popular brands of trucks, agricultural and construction machinery, etc.

### COLOUR SELECTION IS SUPPORTED BY:



**COLOUR SAMPLE**  
**APP MODULAR INDUSTRIAL COLORBOX**  
Containing more than 2,500 colour mappings.



**Colour reader for solid colours**  
**APP MODULAR INDUSTRIAL CAPSURE**  
Allowing rapid colour readings from virtually any surface. The result of the reading is a precisely given reference in the APP Modular Industrial Line database, with the possibility of finding a lighter or darker colour variant and information on the degree of match to the sample.

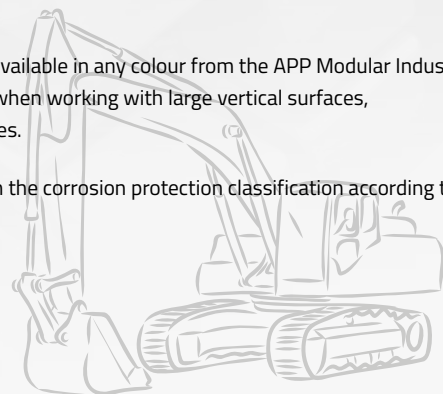
### The ready-colour lacquer can be prepared as a tinted:

- two-component acrylic-polyurethane resin with a high gloss and high chemical resistance,
- two-component polyurethane resin in various degrees of gloss (gloss, satin, matt) – with good mechanical and chemical resistance,
- two-component polyurethane resin (gloss, satin, mat) with the possibility of applying it directly to metal (DTM – enamel undercoat) with good mechanical and chemical resistance,
- one-component alkyd resin (gloss/matt) for less demanding cost-effective coating processes,
- acrylic-polyurethane structural resin – PREDATOR TINT protective coating.

### The entire offer is complemented by:

- grey epoxy primer,
- grey polyurethane primer,
- SEALER – tinted insulating and adhesion primer for use without sanding the substrate, available in any colour from the APP Modular Industrial palette,
- THIXO thickening additive – increases working viscosity and prevents streaking, for use when working with large vertical surfaces,
- hardeners and thinners designed for the system at different setting and evaporation times.

Appropriate use of the primer + resin combination guarantees a coating that complies with the corrosion protection classification according to ISO 12944. The chemical resistance of the individual resins has been tested according to ISO 4628-1.



APP nr 0270110

## Lack 30-100 AY/PUR 2:1 Gloss 2K acrylic-polyurethane lacquer

Two-component, high-gloss acrylic-polyurethane lacquer with enhanced chemical resistance. Designed for coating, e.g.



commercial vehicles



buses



tractor cabs



rail vehicles



TDS 0270110

APP nr 0270118 / 0270122 / 0270126

## Lack 30-200 PUR 4:1 Gloss / Satin / Mat 2K polyurethane lacquer

Two-component polyurethane lacquer with good mechanical resistance, increased impact and scratch resistance, as well as resistance to chemical effects. Available in three gloss finishes: gloss, satin, matt. Designed for coating, e.g.



commercial vehicles



forklift trucks



semi-trailers



tanks



steel structures



machine parts



TDS 0270118



TDS 0270122



TDS 0270126

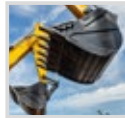
APP nr 0270130 / 0270134 / 0270138

## Lack 30-220 PUR DTM 4:1 Gloss / Satin / Mat 2K polyurethane lacquer

Two-component polyurethane lacquer with good mechanical resistance, with added anti-corrosion pigments and direct adhesion to iron, stainless steel, galvanised steel, cast iron, aluminium, ABS, PVC, methacrylate and gelcoat without the need for a primer. Available in three gloss finishes: gloss, satin, matt. Increased resistance to impacts and scratches, as well as chemical effects. Designed for coating, e.g.



industrial installations



construction machinery



tanks



agricultural machinery



machine parts



steel components



TDS 0270130



TDS 0270134



TDS 0270138

APP nr 0270142 / 0270146

## Lack 30-300 Alkyd Gloss / Mat 1K alkyd lacquer

One-component, fast-drying alkyd enamel resistant to mechanical influences, impacts and scratches. Available in two gloss finishes: gloss, matt. Designed for less demanding, cost-effective coating processes. Designed for coating, e.g.



containers



posts



gates and fences



agricultural machinery



TDS 0270142



TDS 0270146



APP nr 0270150

### Lack 30-140 Predator Tint Satin 3:1

2K acrylic-polyurethane lacquer

Two-component acrylic-polyurethane structural lacquer – protective coating with high mechanical and chemical resistance for coating the load compartment of off-road vehicles, car bodies, pick-up bodyworks. Excellent paint hardness while maintaining flexibility.



TDS 0270150



APP nr 0270148

### Sealer PUR 30-640 Tint WoW 4:1

2K polyurethane primer

Two-component polyurethane insulating and adhesion primer. Tinted to order. For covering, without sanding, of OEM and cataphoretic coatings. Designed to insulate old coatings when repainting them in the wet-on-wet system. Excellent adhesion to old coatings.



TDS 0270148



APP nr 0276631

### Primer PUR 30-630 Grey 5:1

2K polyurethane primer

Two-component polyurethane anti-corrosion primer. Intended for use on surfaces made of any metal and covered with any lacquer from the APP Modular Industrial Line system. Allows wet-on-wet working. Colour: grey



TDS 0276631



APP nr 0276621

### Primer EP 30-620 Grey 4:1

2K epoxy primer

Two-component epoxy anti-corrosion primer. Intended for use on surfaces made of any metal and covered with any lacquer from the APP Modular Industrial Line system. Allows wet-on-wet working. Colour: grey



TDS 0276621



APP nr 0279921

### Thixo Additive 30-920

Thickening additive for lacquers and primers

Thickening additive for adjusting the working viscosity of two-component primers and lacquers from the APP Modular Industrial Line system during their preparation for application. Application: maximum 10% by volume of the main product. The accessory can be ordered together with a ready colour from the APP Modular Industrial range. Colour: transparent



TDS 0279921



APP nr 0277713 / 0277714 / 0277716 / 0277718 / 0277719

### Hardener PUR 30-710

Hardener for polyurethane and polyurethane-acrylic products

Hardener intended for use with two-component PU and AY/PU products from the APP Modular Industrial Line system. Three types of hardener available: slow, normal and fast.



APP nr 0277721

### Hardener EP 30-720

Hardener for epoxy primer

Hardener intended for use with two-component EP primer from APP Modular Industrial Line system (Primer EP 30-620).



APP nr 0278812 / 0278814 / 0278815

### Thinner Universal 30-810

#### Universal thinner

Thinner for adjusting the working viscosity of two-component PU, AY/PU and EP products from the APP Modular Industrial Line system during their preparation for application. Use according to the diluted product formulation. Two evaporation rates available: normal and slow.



APP nr 0278822 / 0278823 / 0278825 / 0278826

### Thinner Alkyd 30-820

#### Alkyd thinner

Thinner for adjusting the working viscosity of one-component alkyd products from the APP Modular Industrial Line system during their preparation for application. Use according to the diluted product formulation. Two evaporation rates available: normal and slow.

## LACQUER / HARDENER / THINNER

PRODUCT		HARDENER				THINNER						
APP No.	Name	APP No.	Type	Hardener (proportion)	Pack.	APP No.	Type	Thinner (volume %)	Pack.			
0270110	LACK AY/PUR 30-100 GLOSS	0277713	SLOW	30-710 (2:1)	5 L	0278812	SLOW	30-810 (10-20%)	5 L			
		0277714	NORMAL		1 L				0278814	NORMAL	1 L	
		0277716	NORMAL		5 L							
		0277718	FAST		1 L							
		0277719	FAST		5 L							0278815
0270150	LACK AY/PUR 30-140 PREDATOR TINT SATIN	0277713	SLOW	30-710 (3:1)	5 L	0278812	SLOW	30-810 (0-10%)	5L			
		0277714	NORMAL		1 L				0278814	NORMAL	1L	
		0277716	NORMAL		5 L							
		0277718	FAST		1 L							
		0277719	FAST		5 L							0278815
0270118	LACK PUR 30-200 GLOSS	0277713	SLOW	30-710 (4:1)	5 L	0278812	SLOW	30-810 (5-10%)	5 L			
		0277714	NORMAL		1 L				0278814	NORMAL	1 L	
		0277716	NORMAL		5 L							
0270122	LACK PUR 30-200 SATIN	0277718	FAST	1 L	0278815	NORMAL	5 L	5 L				
0270126	LACK PUR 30-200 MAT	0277719	FAST	5 L								
0270130	LACK PUR 30-220 GLOSS	0277713	SLOW	30-710 (4:1)	5 L	0278812	SLOW	30-810 (10-20%)	5L			
		0277714	NORMAL		1 L				0278814	NORMAL	1 L	
		0277716	NORMAL		5 L							
		0277718	FAST		1 L							
0270134	LACK PUR 30-220 SATIN	0277719	FAST	5 L	0278815	NORMAL	5L	5L				
0270138	LACK PUR 30-220 MAT	0277713	SLOW	-	-	-	-	-	5 L			
		0277714	NORMAL						1 L	0278822	SLOW	1 L
		0277716	NORMAL						5 L	0278823	SLOW	5 L
		0277718	FAST						1 L	0278825	NORMAL	1 L
0270142	LACK ALKYD 30-300 GLOSS	-	-	-	-	-	-	-	5 L			
0270146	LACK ALKYD 30-300 MAT	-	-	-	-	-	-	-	5 L			
									0278822	SLOW	1 L	
									0278823	SLOW	5 L	
									0278825	NORMAL	1 L	
0276621	PRIMER EP 30-620 GREY	0277721	NORMAL	30-720 (4:1)	1L	0278826	NORMAL	30-820 (20-30%)	5 L			
									0278822	SLOW	1 L	
									0278823	SLOW	5 L	
									0278825	NORMAL	1 L	
0276631	PRIMER PUR 30-630 GREY	0277721	NORMAL	30-720 (4:1)	1L	0278812	SLOW	30-810 (10-20%)	5L			
						0278814	NORMAL		1L			
						0278815	NORMAL		5L			
						0277713	SLOW		5 L			
						0277714	NORMAL		1 L			
0270148	SEALER 30-640 TINT	0277713	SLOW	30-710 (5:1)	5 L	0278812	SLOW	30-810 (0-20%)	5L			
									0277714	NORMAL	1 L	
									0277716	NORMAL	5 L	
									0277718	FAST	1 L	
									0277719	FAST	5 L	0278815
0270148	SEALER 30-640 TINT	0277713	SLOW	30-710 (4:1)	5 L	0278812	SLOW	30-810 (10-25%)	5L			
									0277714	NORMAL	1 L	
									0277716	NORMAL	5 L	
									0277718	FAST	1 L	
									0277719	FAST	5 L	0278815