

Tint Predator 3:1

- **APP Tint Predator / APP Harter C300 Predator**

Two-Component Polyurethane Protective Coating

Two-Component Polyurethane Protective Coating Hardener



APP Tint Predator provides structural two-component Polyurethane-Acrylic protective coating **to be coloured with any top coat from APP Modular Acryl Line**. APP Tint Predator enables coating application at desired colour that will offer very high resistance to scratching.

Provides a long-time protection against mechanical damages and chemicals, as well as anti-corrosion protection.

Advantages:

- + Wide range of colours available,
- + High mechanical strength to impacts, scratches, etc.
- + Resistance to UV radiation and weather conditions,
- + High resistance to chemicals,
- + Fast and easy application,
- + Simple texture control,
- + High hardness and elasticity,
- + Anti-corrosion protection provided by corrosion inhibitor pigments,
- + Perfect bond strength to substrate,
- + Resistance to temperature up to 85°C.



RESISTANCE
TO WEATHER
CONDITIONS



EASY AND QUICK
STRUCTURE
ADJUSTMENT



EASY
APPLICATION



UV RADIATION
RESISTANCE



+ 5-10% OF
APP MODULAR
ACRYL LINE
TOP
COAT

APP nr	Product Name		Volume	Colour	Coll.
050702	APP Tint Predator 3:1	Two-Component Polyurethane Protective Coating	600ml	to be coloured	12 items
050701	APP Harter C300 Predator	Two-Component Polyurethane Protective Coating Hardener	200 ml		12 items

APP Sp. z o.o.

ul. Przemysłowa 10, 62-300 Września

Customer Service Department: Phone +48 61 437 00 20, bok@app.com.pl

www.APP.com.pl

11.10.2019



REFERENCE TEXTURE AND APPLICATION

A similar or uniform background will enhance hiding power of APP Tint Predator

FINE Texture (smooth)

(APP Modular Acryl Line 50-47)

1 Add APP Modular Acryl Line



10%

2 Mixing ratio by volume



3:1 APP Tint Predator
with hardener
APP Harter C 300 Predator

3 Thinner mixing ratio



15% APP Acryl
Verdünnung

4 Application: spray gun



Ø 1,8-2,0

5 Pressure:



2 bar

6 Spraying distance:



20-30 cm

7 Number of coats



2x1

8 Evaporation time between coats



30 min

A similar or uniform background will enhance hiding power of APP Tint Predator

COARSE Texture

(APP Modular 2K Acryl Line
COMMANDO)
APP COLORBOX S6-0117.5

1 Add APP Modular Acryl Line



10%

2 Mixing ratio by volume



3:1 APP Tint Predator
z utwardzaczem
APP Harter C 300 Predator

3 Thinner mixing ratio



0% APP Acryl
Verdünnung

4 Application : Spray gun UBS



5 Pressure:



3 bar

6 Spraying distance:



50-60 cm

7 Number of coats



2x1

8 Intra-coat evaporation

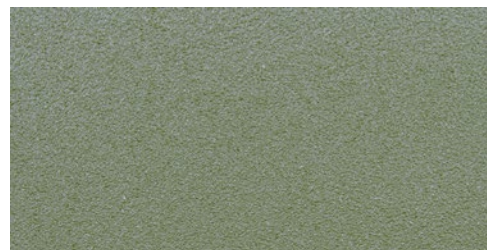
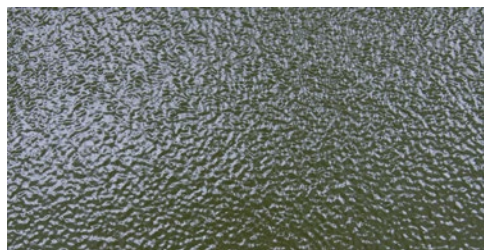


40 min



For any texture a test spray is recommended beforehand.

To obtain matt effect after 2 coat application (following ca. 5 min) a test spray is recommended of thin drop coat at a certain distance.



SAMPLE APPLICATIONS:

AUTOMOTIVE:



car body protection:
four-wheel-drive, camping
and off-road vehicles



running boards



wheel rims



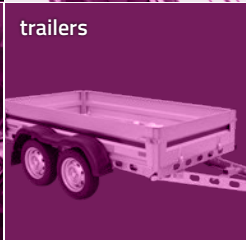
luggage compartments,
boxes



wheel arches



trailers



loading floors and
surfaces



INDUSTRY:



utility vehicles
(e.g. forklifts)



warehouses, hangars



machine and
equipment
enclosures



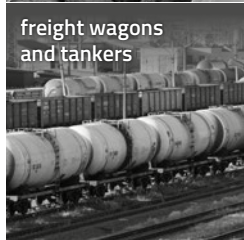
entrance-loading
ramps



load platforms



freight wagons
and tankers



external parts of tanks



external parts
of tanks



FARMING:



agricultural
machines



silos



plows



trailers



SHIP BUILDING:



hulls



kayak



sailboats



docks



OTHER:



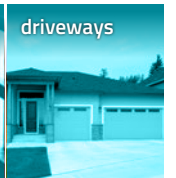
recycling
containers



gates



driveways



wheelbarrows



tool
boxes

