

• NTools Hot Stapler Small Plastic welding kit

NTools Hot Stapler is a kit designed for welding plastics by embedding staples and linking damaged elements. NTool Hot Stapler Small is recommended for repairing body parts such as bumpers, mirror housings, door panels, consoles, trims, covers, grilles, hooks, handles. The kit includes a welding and cutting tip used for smoothing and modelling surface after each repair.

Types of staples available in the kit:

- **Flat staple** 0.8 mm designed for welding of small cracks.
- **Wave staple** 0.8 mm designed for welding of larger cracks.
- **Internal and external corner staple** designed for reinforcing cracks at internal and external corners.

The welding and cutting tip included in the kit ensures more durable embedding of staples in the plastic and provides aesthetic finish of any repairs.



No.	APP No. 220759	NTools Hot Stapler Small	Plastic welding kit	Quantity incl. in the kit
-----	----------------	--------------------------	---------------------	---------------------------

Products included in the kit:

1	Welding and cutting tip			1 pcs.
2	APP nr 220765	NTools CS08	Internal corner staple	20 pcs.
3	APP nr 220764	NTools WS08	Wave staple 0.8 mm	20 pcs.
4	APP nr 220762	NTools FS08	Flat staple 0.8 mm	40 pcs.
5	APP nr 220766	NTools OS08	External corner staple	20 pcs.
6	Manual plastic welding machine			1 pcs.

Related products offered by APP:

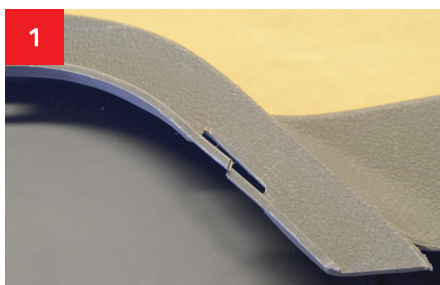
220761 – NTools FS06
Flat staple

220761 – NTools WS06
Wave staple

• NTools Hot Stapler Small

The process of repairing damaged plastic components by embedding staples in order to merge the damage.

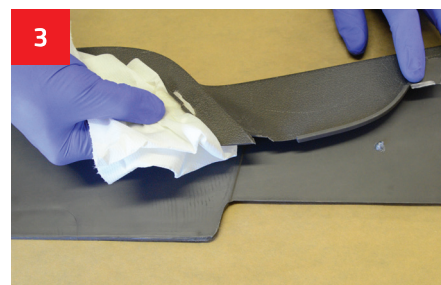
A detailed process of repairing damaged components using the NTool Hot Stapler Small kit may be found below.



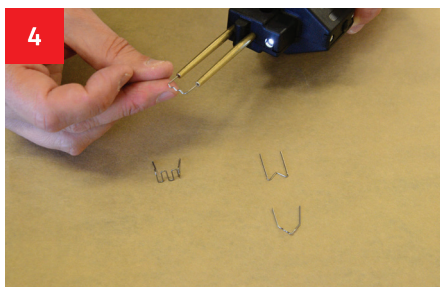
1 Inspection of the damage and selection of repair technology.



2 Before starting the repair, the surface should be cleaned and degreased using WK900.



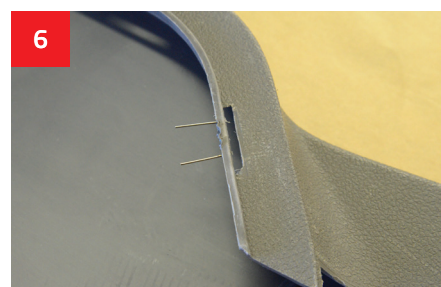
3 Cleaning and degreasing the area of the repair using WK900 on both sides of the damage.



4 Selecting appropriate shape of the staple and mounting it in the adapter.



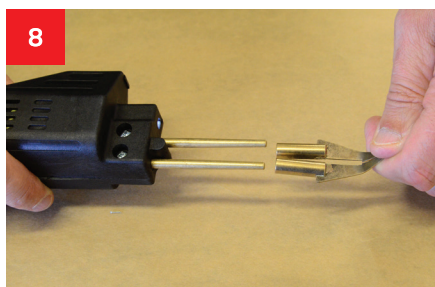
5 Embedding the staple into the damaged area.



6 Waiting 30 second after embedding the staple.



7 Any protruding ends of the staples should be cut using a cutter.



8 Attaching the welding and cutting tip to the adapter.



9 The staples' ends still protruding after cutting should be ground (e.g. using a grinder APP No. 139102).

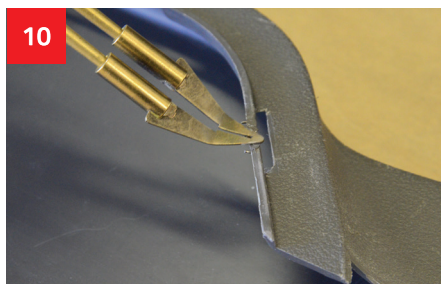
continuation of the repair process



- **NTools Hot Stapler Small**

The process of repairing damaged plastic components by embedding staples in order to merge the damage.

→ continuation of the repair process



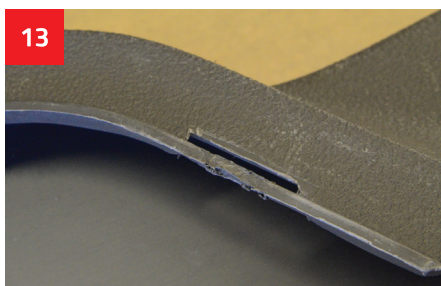
10 Smoothing the area of the repair using the welding and cutting tip (from all sides).



11 Hiding the protruding ends of the staples using the hot tip, as much as possible.



12 Cleaning the tip, if necessary.



13 Now the repaired component may be further used.