



• NTools Hot Stapler Set Plastic Welding Kit

NTools Hot Stapler Set is a plastic welding kit for professionals. **Three temperature** settings enable work with plastic of different hardness and elasticity. Specially designed staplers of appropriate thickness make repairs easy and permanent. Specially designed handle and stapler angle control system enables work in hardly accessible spaces. **NTools Hot Stapler Set** is recommended for repair of plastic elements including bumpers, mirrors housing, door panels, consoles, moulding, grille, clips, covers etc. Kit includes **three types of stainless steel staples** of different thickness.

TEMPERATURE CONTROL:

LOW- THIN AND SOFT PLASTIC

MEDIUM- THICK AND SEMI-RIGID PLASTIC

HIGH- THICK AND HARD PLASTIC

STAPLES:

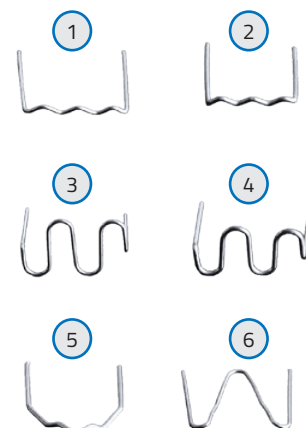
a) Flat - for plastic small cracks

b) Snake type – for plastic big cracks

c) Corner – for reinforcing of inner
and outer corners of cracks

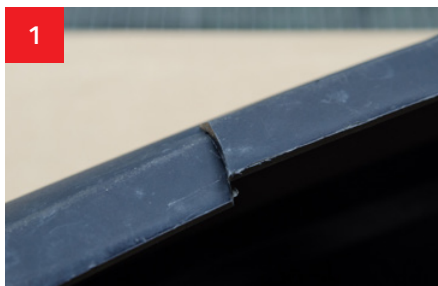


220760	NTools Hot Stapler Set		Plastic Welding Set	Qty
Set includes:				
1	220761	NTools FS06	Stapler set – flat 0.6mm	100
2	220762	NTools FS08	Stapler set – flat 0.8mm	100
3	220763	NTools WS06	Stapler set-snake 0.6mm	100
4	220764	NTools WS08	Stapler set-snake 0.8mm	100
5	220765	NTools CS08	Stapler set-corner inner 0.8mm	100
6	220766	NTools OCS06	Stapler set-corner outer 0.8mm	100
7			Case	1
8			Stapler trimmer	1
9		NTools HOT Stapler	Hot gun	1



- **NTools Hot Stapler Set**
Procedure of plastic component repairs with staplers

Specially designed handle and stapler angle control enable to work also in hardly accessible spaces. **NTOOLS Hot Stapler Set** is recommended for repair of plastic elements including bumpers, mirrors housing, door panels, consoles, moulding, grille, clips, covers etc. Kit includes three type of stainless steel stapler of different thickness.



1 Carry out damage visual inspection.



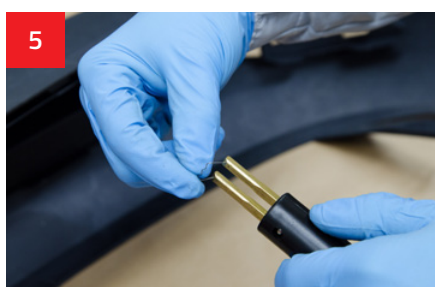
2 Clean and degrease the surface with WK900 Stripper.



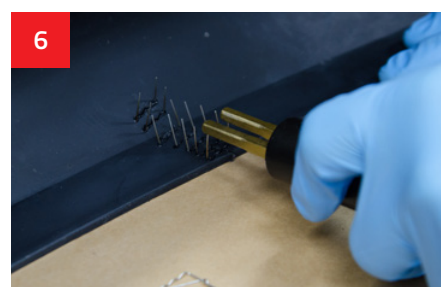
3 Adjust Hot Stapler temperature: Low, Medium or High.



4 Select a stapler appropriate for damage nature.



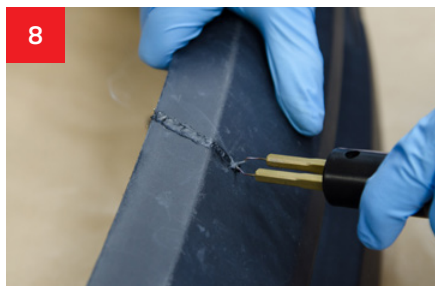
5 Fix the stapler into adapter at desired angle: 180°, 135°, 90°.



6 Insert the stapler to repair the damage.



7 Trim the stapler with the trimmer.



8 Perform welding with the Hot Stapler.